

Gnosi[®] Finish Guide



Finishes

STACK/SLED CHAIR BASE: White, Black, Chrome

TASK CHAIR BASE: Light Grey, Dark Grey

POLY: White, Pearl Grey, Anthracite, Light Green, Orange, Yellow, Light Blue

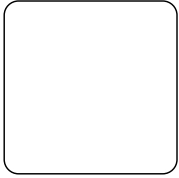
TABLET: White, Black

TEXTILES:

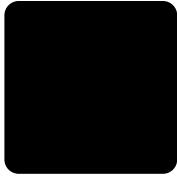
- Fabric – Absecon Mills Sherpa & Shire Card, Absecon Mills Sidestep Card, Camira Era Card, Camira Xtreme Card, Camira X2 Card & Momentum Color Card
- Coated Fabric – Spradling Coated Card

Finishes

Base: Stack/Sled Chair



White

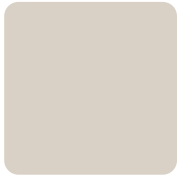


Black

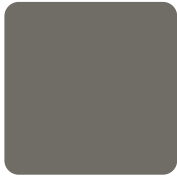


Chrome

Base: Task Chair

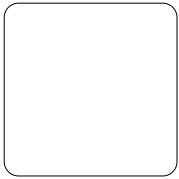


Light Grey

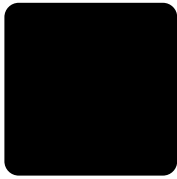


Dark Grey

Tablet

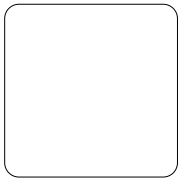


White

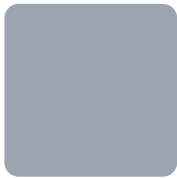


Black

Poly



White



Pearl Grey



Anthracite



Light Green



Orange



Yellow



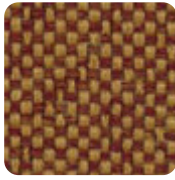
Light Blue

Textiles

Absecon Mills Sherpa & Shire Card > [click to view](#)

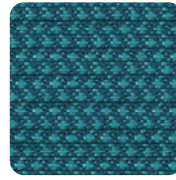


Sherpa
(Grade 1)



Shire
(Grade 1)

Absecon Mills Sidestep Card > [click to view](#)



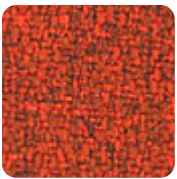
Sidestep
(Grade 1)

Camira Era Card > [click to view](#)



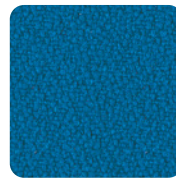
Era (Grade 2)

Camira X2 Card > [click to view](#)



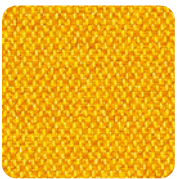
X2 (Grade 3)

Camira Xtreme Card > [click to view](#)

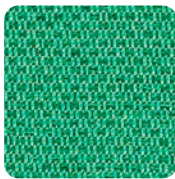


Xtreme (Grade 3)

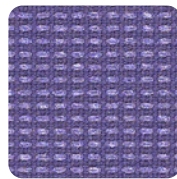
Momentum Color Card > [click to view](#)



Infinity
(Grade 3)



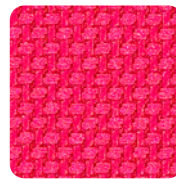
Marathon
(Grade 3)



Millennium
(Grade 3)



Odyssey
(Grade 3)

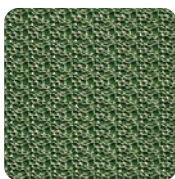


Tradition
(Grade 3)

Spradling Coated Card > [click to view](#)



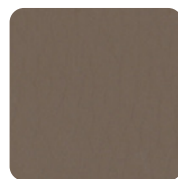
Whisper
(Grade 3)



Hitch
(Grade 4)



Silvertex
(Grade 4)



Dolce
(Grade 5)

* Refer to website for full range of colors