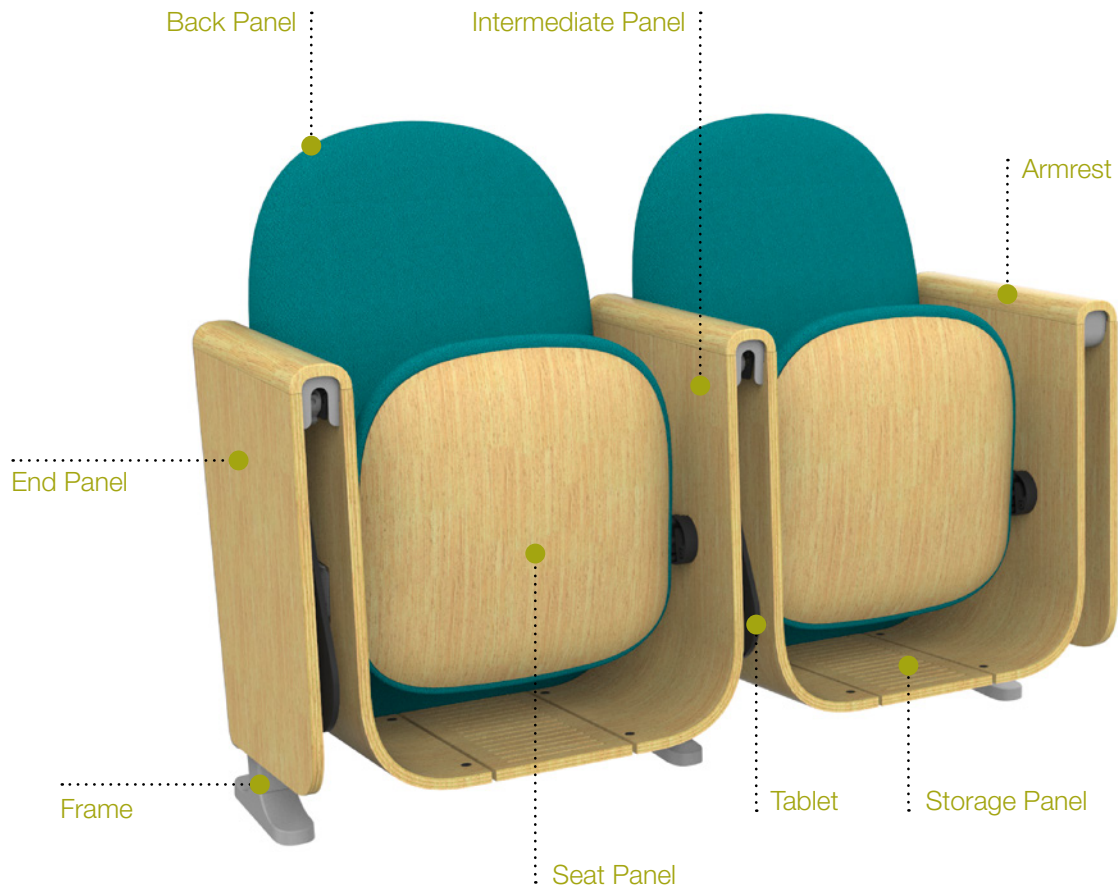


Sine Finish Guide



Finishes & Textiles

SEAT & BACK PANELS: Upholstery or Wood

END, INTERMEDIATE & STORAGE PANELS: Wood

ARMRESTS: Upholstery or Wood

TABLET: Black Phenolic

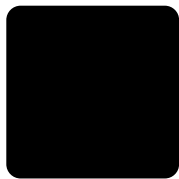
FRAME: Silver or Black

TEXTILES:

- Fabric – Absecon Mills Sherpa & Shire Card, Camira Era Card, Camira Xtreme Card, Camira X2 Card & Momentum Color Card
- Coated Fabric – Spradling Coated Card

Finishes

Frame

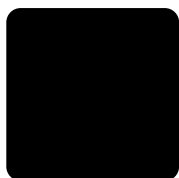


Black



Silver

Tablet



Black Phenolic

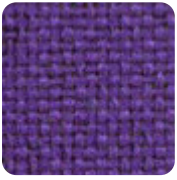
Wood



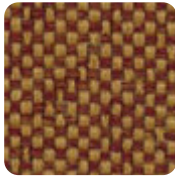
White Oak

Textiles

Absecon Mills Sherpa & Shire Card > [click to view](#)



Sherpa
(Grade 1)



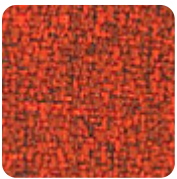
Shire
(Grade 1)

Camira Era Card > [click to view](#)



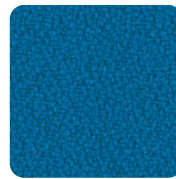
Era (Grade 2)

Camira X2 Card > [click to view](#)



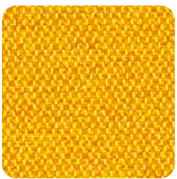
X2 (Grade 3)

Camira Xtreme Card > [click to view](#)

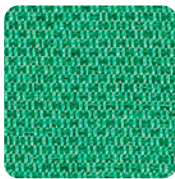


Xtreme (Grade 3)

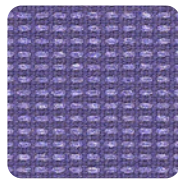
Momentum Color Card > [click to view](#)



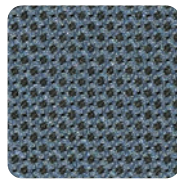
Infinity
(Grade 3)



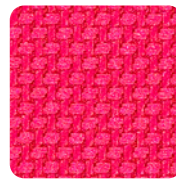
Marathon
(Grade 3)



Millennium
(Grade 3)



Odyssey
(Grade 3)

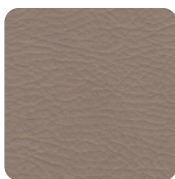


Tradition
(Grade 3)

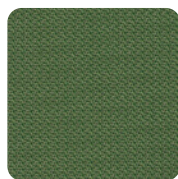
Spradling Coated Card > [click to view](#)



Modena
(Grade 2)



Whisper
(Grade 3)



Hitch
(Grade 4)



Silvertex
(Grade 4)

* Refer to website for full range of colors