

# Tecton Finish Guide



## Finishes

### STACK / CASTER CHAIR

BASE: Silver, Black

BACK: Perforated Black Poly, Upholstery

### TASK CHAIR

BASE: Black

BACK: Perforated Poly, Upholstery, Mesh

POLY: White, Light Grey, Black

MESH: Silver, Green, Red, Blue, Gray, Black

TEXTILES: (seat & back)

- Fabric: Absecon Mills Sherpa & Shire, Camira Era, Camira X2, Camira Xtreme & Momentum Color Cards
- Coated Fabric: Spradling Coated Card

# Finishes

---

## Base



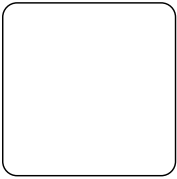
Silver



Black

---

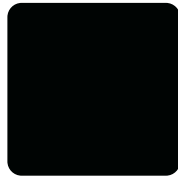
## Poly



White



Light Grey



Black

---

## Mesh



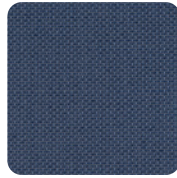
Silver 33



Green 90



Red 60



Blue 71



Gray 12



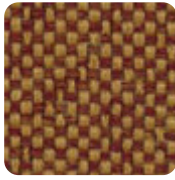
Black 10

# Textiles

Absecon Mills Sherpa & Shire Card > [click to view](#)



Sherpa  
(Grade 1)



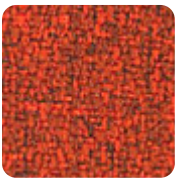
Shire  
(Grade 1)

Camira Era Card > [click to view](#)



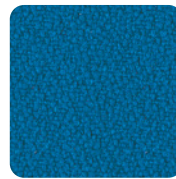
Era (Grade 2)

Camira X2 Card > [click to view](#)



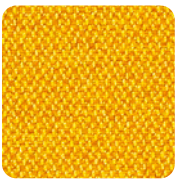
X2 (Grade 3)

Camira Xtreme Card > [click to view](#)

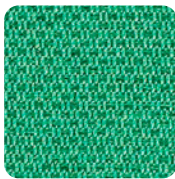


Xtreme (Grade 3)

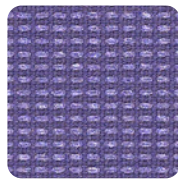
Momentum Color Card > [click to view](#)



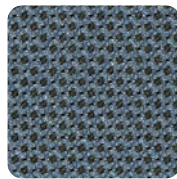
Infinity  
(Grade 3)



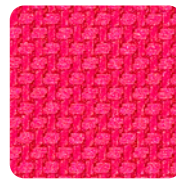
Marathon  
(Grade 3)



Millennium  
(Grade 3)



Odyssey  
(Grade 3)



Tradition  
(Grade 3)

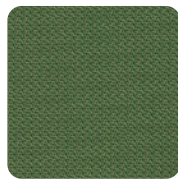
Spradling Coated Card > [click to view](#)



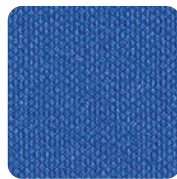
Modena  
(Grade 2)



Whisper  
(Grade 3)



Hitch  
(Grade 4)



Silvertex  
(Grade 4)

\* Refer to website for full range of colors