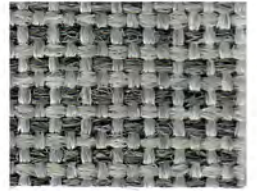


GEMINI



EBONY GM20



SILVER GM39



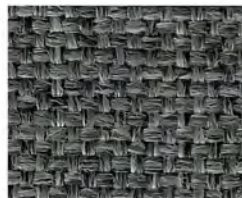
SLATE GM40



GREY MIX GM22



STEEL GM41



DARK GREY GM15



METAL GM27



CHARCOAL GM09



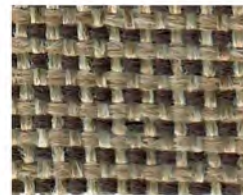
NUTMEG GM33



OATMEAL GM34



BROWN HAZE GM05



DESERT GM19



TRUFFLE GM43



TOAST GM42



CASHMERE GM07



COBBLESTONE GM12



ESPRESSO GM21



ASH GM03



DARK OATMEAL GM16



CRIMSON GM13



CAYENNE GM08



MAROON GM26



DEEP GREEN GM17



ACADEMY BLUE GM01



NORDIC GM32



MIDNIGHT GM28



NAVY GM30



NEW PURPLE GM31

Gemini Specifications

Content: 100% Polyolefin

Width: 54"

Backing: Acrylic

Weight: 16 oz. ± 0.5 oz. per linear yard

Abrasion: Exceeds 100,000 double rubs (ACT approved wirescreen)

Lightfastness: Class 5

700 hours of UV stability

Chemically inert and hydrophobic

Will not absorb spills or stains

Mildew resistant

Non-allergenic

Not affected by chemicals

Static resistant (less than 2.0 kv at 20% RH)

Flammability

California Technical Bulletin 117 Section E Class | Pass

UFAC: Class | Pass

NFPA 260 Cigarette Ignition: Class | Pass

MVSS 302: Class | Pass

Easy Maintenance

All commercial cleaning agents and solvents can be used

"WS" For water-based stains use water-based cleaning agents

"WS" For oil based stains use solvent cleaner

Made in the USA

Berry Compliant

Limited Lifetime Warranty - For All Indoor Applications

