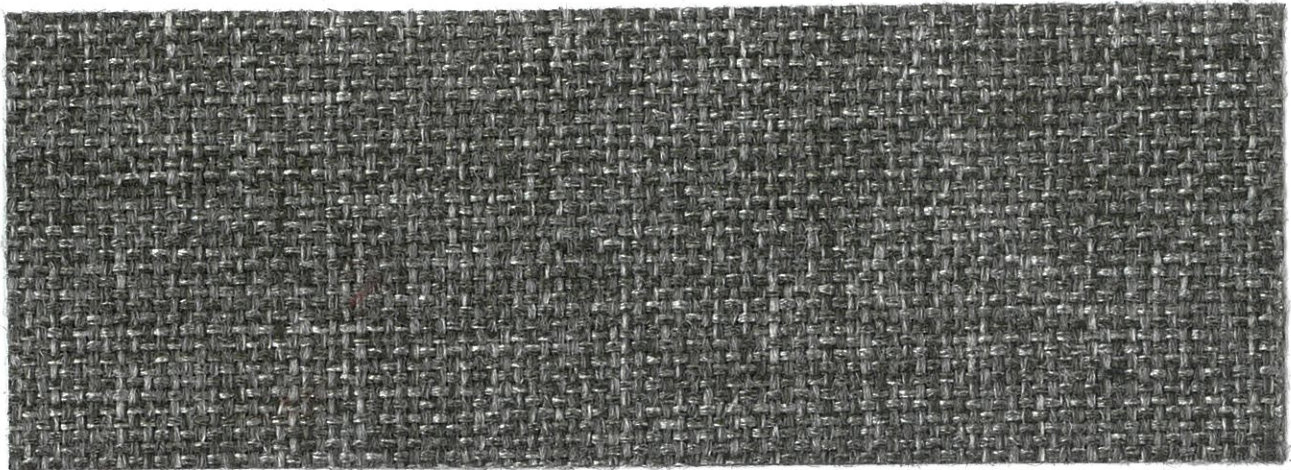


Empress



Sandy Grey



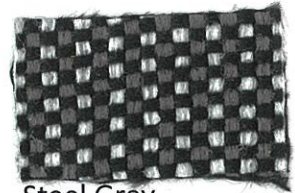
Grey



Grey Mix



Oxford



Steel Grey



Sandy Grey Black



Granite



Black



Royal



Mariner



Ocean



Midnight



Cardinal



Burgundy



Marron



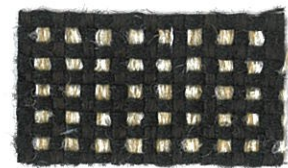
Ruby



Court



Mahagoney



Camell Latte



Capuchino



Stone

Empress

Specifications & Technical Information

FIBER: 100% Polyolefin

WEIGHT: 15 ounce per linear yard (±1 oz.) 430 g/m

WIDTH: 55.1" (140 cm)

BACKING: Vinyl Acrylic Resin

FLAMMABILITY: Auto extinguishable, melting point 135 O C

FLAME RESISTANCE: California Technical Bulletin 117, section E.

RESISTANCE TO ABRASION: Warp and Weft: no wear to 100,000 cycles ASTM-D-4157

SEAM SLIPPAGE: Warp 140.0 lbs. Fill 140.0 lbs. ASTM-D-434-1995

BREAK STRENGTH: Warp: 150.0 Fill 180.0 ASTM-D-5034-09; Warp 82.8 lbs. Fill 94.9 lbs. ASTM-D5035-06 (2008)

TEAR STRENGTH: Warp 15.0 lbs. Fill 17.0 lbs. ASTM-1424-09

RESISTANCE TO PILLING: Class 5 ASTM-D-4970-2007

COLORFASTNESS: NMX-A-073-INNTEX-2005 Dry Wet Class 3-4

LIGHTFASTNESS: AATCC-TEST METHOD-016-2004 Class 4-5

Cleaning Instructions

WS - For water-based stains, use a mild detergent foam or upholstery shampoo. For oil-based stains, spot clean fabric with a dry-cleaning solvent, being sure to test area first. Cleaning by a professional cleaning service is recommended.

Colors may vary slightly from dye lot to dye lot.

TEDESA®
FABRICS